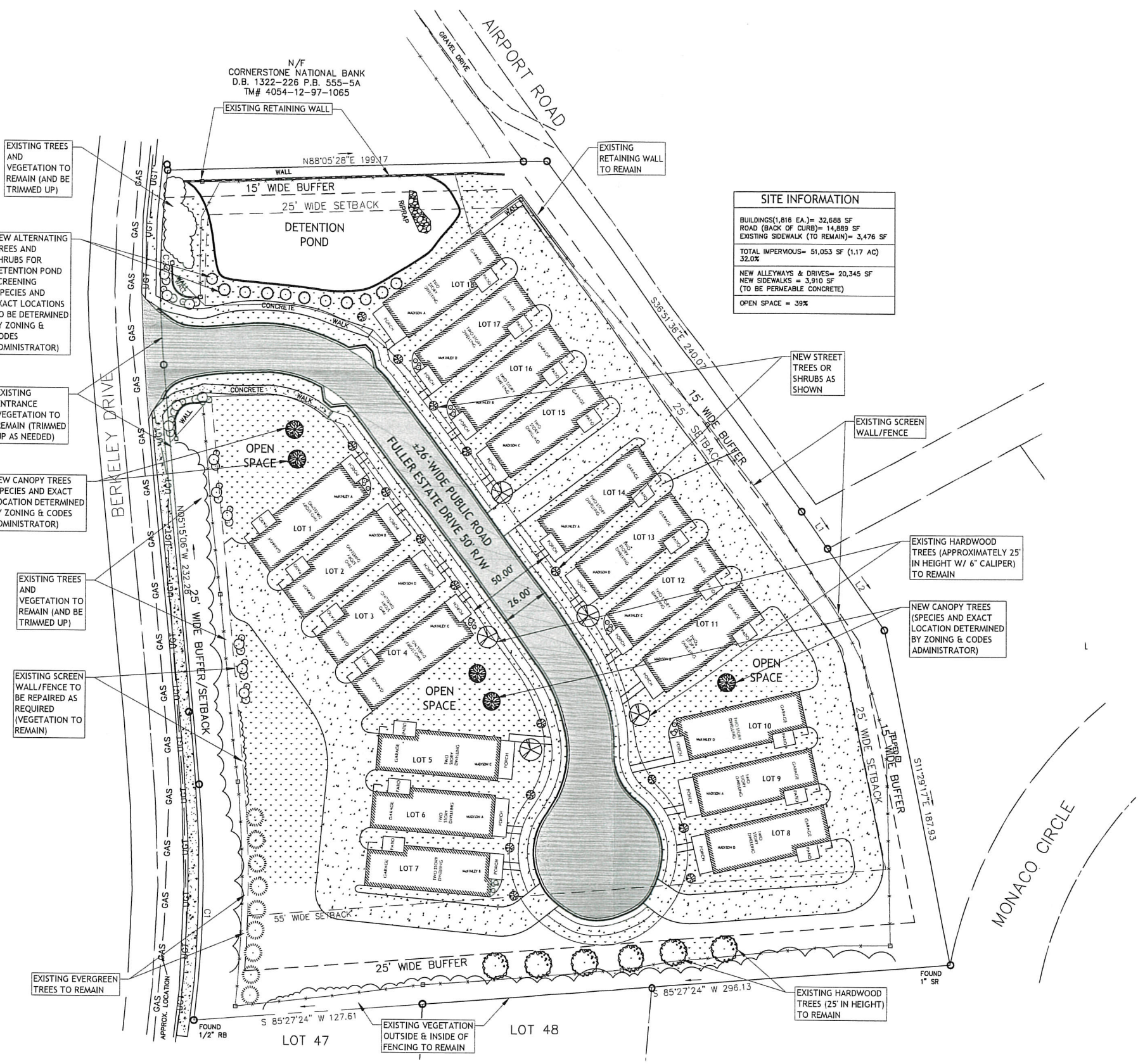


- ADDITIONAL AGREED TO TERMS PER JULY 17TH PUBLIC HEARING:
1. PLANTING TO BE INSTALLED AS TO FILL VOIDS ALONG MONACO ESTATES PROPERTY.
 2. REPAIR FENCING IN AREAS OF DISREPAIR.
 3. THE LARGE DEAD TREE AT THE BACK OF LOTS 48 & 49 IS TO BE REMOVED.
 4. NO STREET LIGHTING TO BE ON CUL-DE-SAC AREA AS APPROVED IN ORIGINAL PD.
 5. MAINTAIN 55' SETBACK ALONG MONACO ESTATES LOTS 47, 48, AND 49 AS APPROVED IN THE ORIGINAL PD.



SITE INFORMATION

BUILDINGS (1,816 EA.)	= 32,688 SF
ROAD (BACK OF CURB)	= 14,889 SF
EXISTING SIDEWALK (TO REMAIN)	= 3,476 SF
TOTAL IMPERVIOUS	= 51,053 SF (1.17 AC)
	32.0%
NEW ALLEYS & DRIVES	= 20,345 SF
NEW SIDEWALKS	= 3,910 SF
(TO BE PERMEABLE CONCRETE)	
OPEN SPACE	= 38%

PROPOSED LANDSCAPING & SITE PLAN SCALE: 1"=30'

GREAT SOUTHERN HOMES CANNOT GUARANTEE AGAINST ERRORS & OMISSIONS WITHIN THESE PLANS. THE CONTRACTOR MUST VERIFY ALL DIMENSIONS AND MAY ADJUST THE CONSTRUCTION ACCORDINGLY TO INDUSTRY STANDARDS.

THESE PLANS, DRAWINGS AND/OR DOCUMENTS AND THE INFORMATION CONTAINED THEREIN ARE CONFIDENTIAL AND PROPRIETARY TO GREAT SOUTHERN HOMES AND ARE TRADE SECRETS AS DEFINED BY S.C. CODE ATIN. 39-8-20 (5)(a)(b). COPYRIGHT © 2017

VILLAGE AT BERKELEY

REV. NO.	DATE	DESCRIPTION
1	06/27/17	ADDED TREES & SHRUBS
2	07/28/17	REVISIONS FROM HEARING



DRAWN: EBP
DATE: 04/28/17

DRAWING TITLE:
LANDSCAPING/
SITE PLAN
DRAWING NO.
LS-1